

SCHOOL READINESS PROGRAM

Framework for Implementaion

A sample guide with tools and resources to implement a parental capacity building intervention in order to enhance school readiness for three to six years old children.

(The tools in the guide were tested by Indus Action through an end to end implementation in 15 Anganwadi centers in New Delhi)



INDUS ACTION

1. NEED ASSESSMENT

Objective : To analyze the current state of school readiness among 3 to 6 year olds in the community, to justify the need for such a program to families and partners.

A

Collect sample school readiness data in the target community

1. Find the school readiness assessment and guidelines to administer here [\(LINK\)](#).
2. Find the online form to capture this data here [\(LINK\)](#).
3. Data can be collected for a sample of children in the range of 200-500 based on the team's capacity.
4. Assess the child in the presence of the parent.
5. Calculate the percentage of children ready for school in the sample.

B

Gauge parental engagement as a priority for WCD/ DOE? Questions to answer:

1. What is the motivation and investment in building parent engagement in both the departments?
2. What are the existing government programs for parent engagement?
3. What are the current ECE activities in both the departments and determine how they engage parents in these activities?



C

Conduct small scale focus group to learn existing schedule of the target audience

Parent schedules

1. Are both parents working?
2. When do they have free time?
3. When do they spend time with the child?
4. Do they pick up and drop the child from the ECE provider (aanganwadi/ play school)?

Children schedules

1. Where do they go for ECE?
2. How long do they stay there?
3. What is their schedule when they are at home?

Facilitator Schedules

1. What is their current job description (for example if it is the AWD worker what roles and responsibilities are defined for them by the state?)
2. When and how many times in their schedule do they interact with the parents?

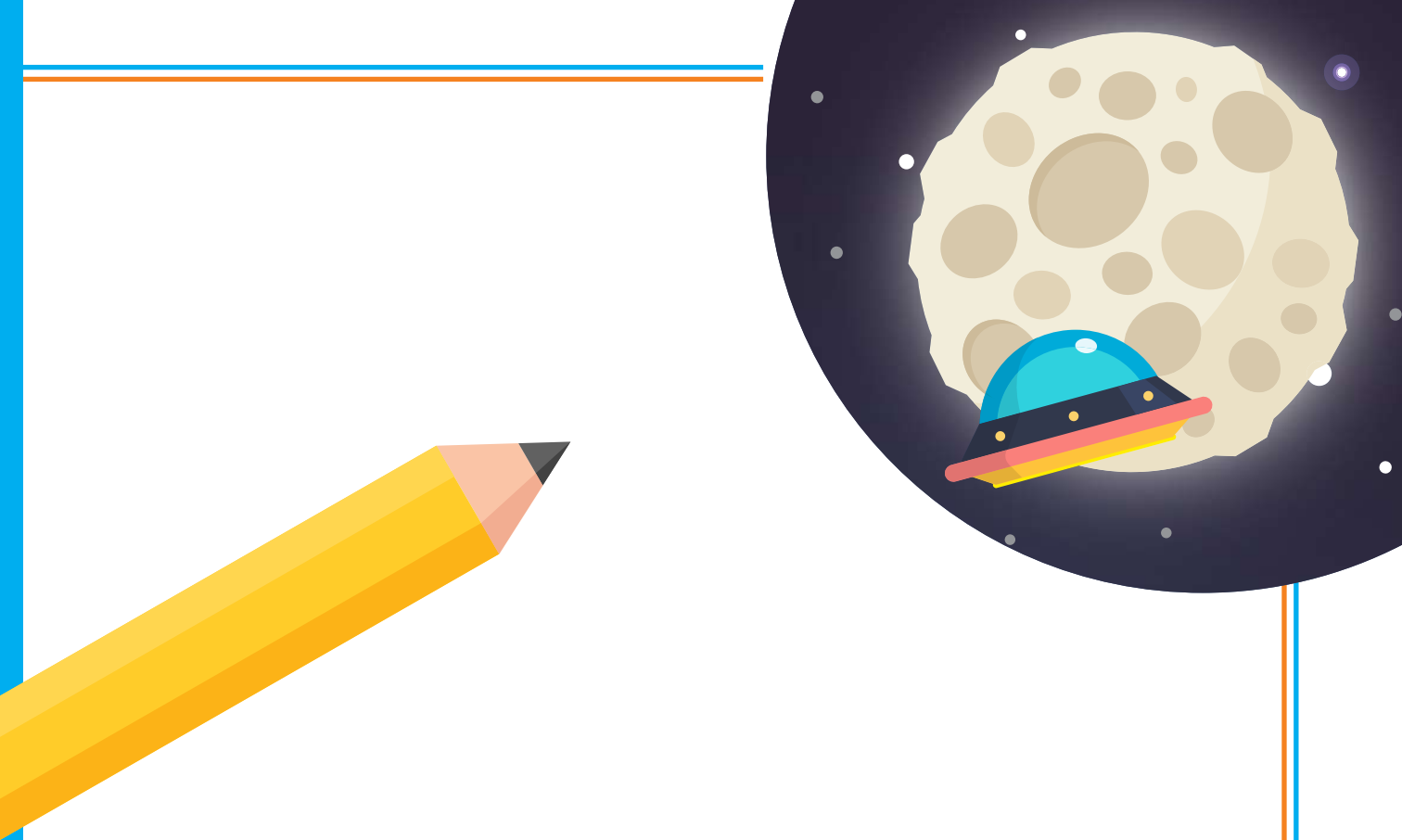


2. ADVOCACY FOR PARTNERSHIP

Identify Partners for program (criterias to keep in mind)

1. Do they have an existing network of ECE centers and facilitators? (For ex WCD, Pratham, Mobile Creche)
2. Do they have daily or weekly interaction with parents of 3 to 6 year olds?
3. Does the network of workers possess basic facilitation skills ?
4. Does the partner's and facilitators align in terms of broader goals of the program and are motivated accomplish them?
5. Sample Partnership letter ([LINK](#)).
6. Sample Partnership Proposal ([LINK](#)).





3. ORIENTATION OF FACILITATORS

1. Why what and how of the school readiness program
Sample curriculum ([Link](#)) for 3 day training (Pick and choose sessions according to time available)
2. Introduction to facilitators kit ([Link](#)).

4. ORIENTATION OF MONITORING AND EVALUATION TEAM

1. Why what and how of the SRA ([Link](#)), KOBO form and Parental Habits Rubric ([Link](#)).
2. Introduction to evaluators kit ([Link](#)) that combines the above 3.



5. KIT PRODUCTION AND ASSEMBLY GUIDE

1. Parts of the kit and its purpose ([Link](#)).
2. High touch curriculum ([Link](#))
Find story sheets here ([Link](#))
(recommended for high literacy parents)
3. Low touch curriculum ([Link](#)) (recommended for low literacy parents)



6. ONBOARDING PARENTS AND DISSEMINATION OF CURRICULUM

How to induct parents using a simple list of instructions for lead facilitators?

1. Find steps here ([Link](#)).

7. WEEKLY CHECK IN STRUCTURE

How to check-in with parents and provide pointed feedback using a simple checklist?

1. Sample ([Link](#)).



8. MONITORING AND RANDOMIZED VISIT FRAMEWORK

How to monitor programme progress and collect evidence from all participants - parents, AWD members, interns?

1. Sample structure for monitoring ([Link](#)).

9. PROCESS OF IMPACT EVALUATION

**What to measure and how to measure?
How to report?**

1. Sample Impact Evaluation Report ([Link](#)).
2. Sample Impact Presentation ([Link](#)).



10. ADVOCACY FOR SCALE

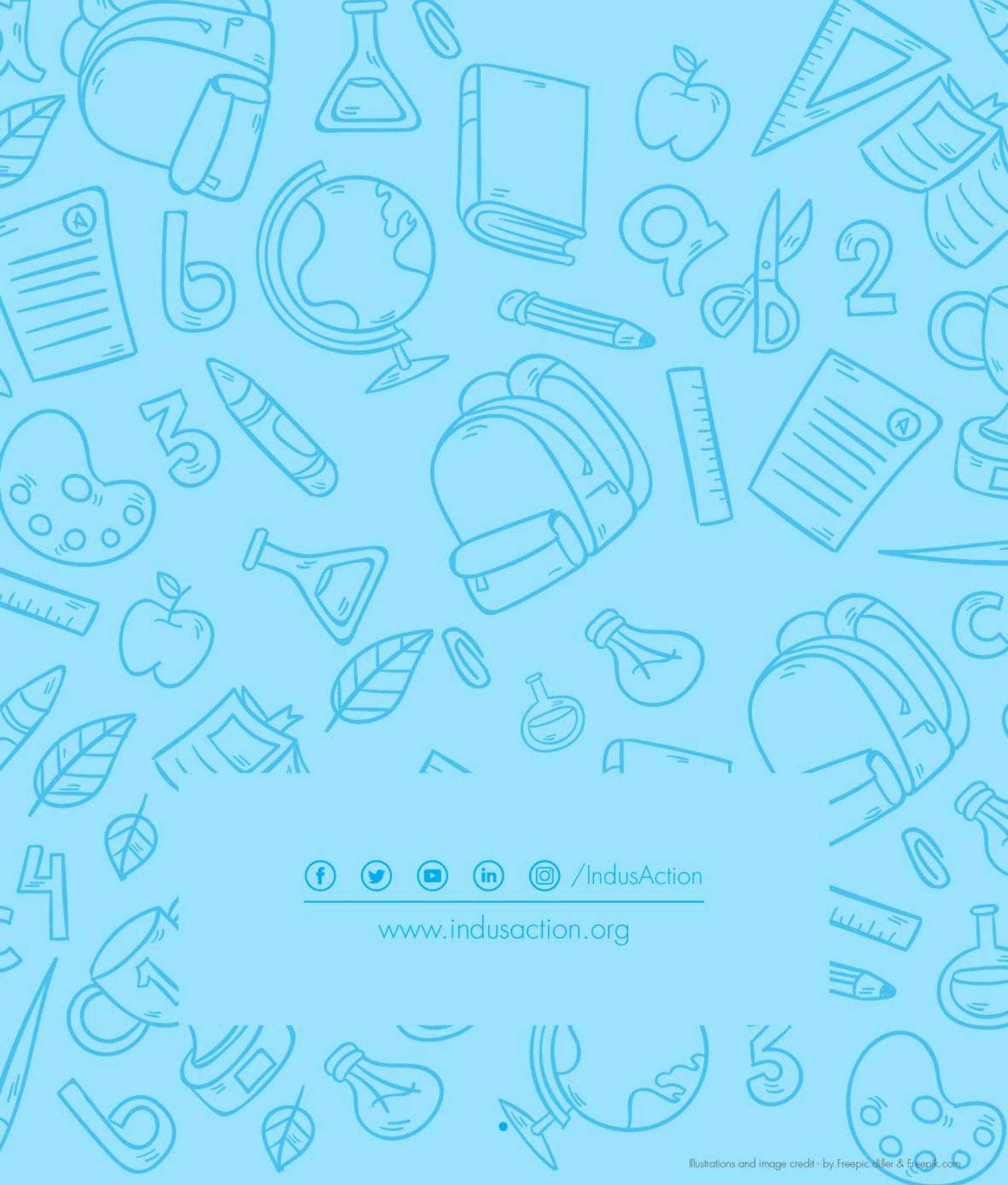
Evidence from Focus Group Discussions (FGD) with parents and AWD members in support of the programme

1. Sample proposal for scale ([Link](#)).



Pilot timeline and program activities in New Delhi

TASK	TIMELINE
1. Identification of 15 pilot centers and facilitators.	20th to 30th June
2. On boarding of 10 Samiti members as facilitators.	1st week of July
3. Induction and onboarding of 150 parents including beginning of pilot assessments.	15th to 30th July
4. Program roll out.	15th to 30th July
5. On call weekly support to facilitators and whatsapp check ins.	15th July to 15th September
6. Randomized visits and observations by IA Staff.	15th to 30th August
7.Endline assessments of all parent-child pairs still in the program.	25th to 30th September
8.Endline assessment of children whose parents dropped out for comparison.	1st week of October
9.Focus Group Discussions with high performing facilitators and caregivers for feedback.	2nd week of October
10.Sample reassessment of endline data to validate assessment of outcomes.	2nd week of October
11. Program evaluation report submitted to the department.	10th November



     /IndusAction

www.indusaction.org